

## Automated mesh design for two-dimensional magnetotelluric interpretation codes

Emin U. Ulugergerli and Mehmet E. Candansayar

Department of Geophysical Engineering, Ankara University, Beşevler, Ankara, 06100 Turkey  
E-mails: E.Ugur.Ulugergerli@eng.ankara.edu.tr; Mehmet.E.Candansayar@eng.ankara.edu.tr

(Received 20 April 2001; accepted 8 June 2001)

---

**Abstract:** A scheme and associated computer programme for designing input mesh for two-dimensional (2D) magnetotelluric (MT) inversion codes are presented. The scheme is based on the so-called penetration depth (PD) concept. A mesh is designed using the average values for the smallest and the largest PDs of all stations along the profile. The location of additional rows and columns required by boundary condition applications are also printed out in a separate file in order to be fixed by the inversion code. An illustrative example of automatic mesh generation is presented. The scheme can be applied to other geoelectrical methods.

---

**Key Words:** Magnetotelluric, Automated Mesh, Niblett -Bostick Transformation, Penetration Depth

---

### INTRODUCTION

In two-dimensional (2D) MT inversion for subsurface resistivity distribution (e.g. Jupp and Vozoff, 1977; deLugao *et al.*, 1997; Mackie *et al.*, 1997), the accuracy of the solution depends on both the data and the mesh used to represent the subsurface geology. The mesh design is usually based on the available a priori information and experience. In the currently popular 2D MT inversion codes such as the OCCAM (deGroot-Hedlin and Constable, 1990), RRI (Smith and Booker, 1991) and NLCG (Mackie *et al.*, 1997), the mesh is designed by the user. This process is time-consuming and sometimes incurs user-dependent errors. The grid size is very much dependent on the frequency of the field variations because the dimensions of the grid cells must be kept small compared with the skin depth in order that the numerical solution approximation may be generally valid. For this reason, portable inversion codes ideally include an automatic mesh generator which is not only a great time-saver but also an eliminator for user-related errors (Weaver, 1994).

The information obtained from the data via simple process such as Penetration depth (PD) and Niblett-Bostick transformation, NBT (Niblett and Say-Wittgenstein, 1960; Bostick 1977; Jones, 1983), may be used to create a mesh that represent the subsurface when no prior information is available. The PD and NBT are common and easy-to-use tools for quick

interpretation of electrical and electromagnetic (EM) data.

Note that the difference between PD and well-known skin depth definitions is that the attenuation factor for the EM wave in a half space medium of resistivity equal to the apparent resistivity is  $\frac{1}{2}$  rather than  $1/e$  (Jones, 1983). It is thus clear that skin depth is deeper than PD. From both definitions one may estimate the depth above which the EM wave sweeps most of the information to surface. As a result, the inversion schemes cannot resolve any geo-electrical structure below the PD because of high attenuation of the EM wave. That is why we will adopt the PD formulation for automatic mesh generation in this paper and we will focus on the case where the earth is 2D in structure (i.e., the PD is different at each station since resistivity varies in lateral and vertical directions along the profile).

Using a similar concept, Oldenburg and Li (1999) show that the inversion process is unable to produce meaningful model below the depth of investigation (DOI in their paper) and proposed a scheme to delineate the depth level below which the model parameters are not constrained by the data. However, the modeling theory requires the mesh to extend deeper than that level in order to satisfy boundary conditions. In practice, 8 to 10 rows and columns of the cells are usually added to the mesh depending on the code and speed of computers. In the inversion process the added cells will only increase the number of unknown parameters.



## 2D MODELING PROCESS

The fundamental equations for 2D modeling are well documented in the literature (e.g. Brewit-Taylor, 1976; Zhdanov *et al.*, 1982; Wannamaker *et al.*, 1985) and will not be re-counted here. The inversion codes based on these or similar modeling schemes are also widely in use (e.g. Sasaki, 1989; Uchida and Ogawa, 1993; de Lugão *et al.*, 1997; Mackie *et al.*, 1997). All these codes necessarily require inputs such as field responses, mesh specifications, and stopping and stabilization criteria for inversion but in different formats. The observed data for all the stations along the profile are given sequentially and initial resistivity model consists of a mesh of cells each of with defined width, thickness and resistivity. The thickness and width of each cell are crucial parameters controlling the accuracy of the solution. The effect of these parameters may be shown by the response of the simple model given in Figure 1a. The model has 2 layers (100 and 250 m thick) underlain by crystalline basement. The resistivities of the layers and basement are 100, 1 and 500 Ohm.m, respectively, and a block of 5 Ohm.m is imbedded into the top layer. The MT responses for two different meshes have been calculated using the well-known 2-D finite element modelling code (PW2D) of Wannamaker *et al.* (1985) and a code based on finite differences modelling scheme developed by one of us (MEC) for illustration.

The first grid design used for model computation (Mesh 1) consists of 28x18 cells. Four rows of cells, each 25 m thick, comprise the first geoelectric layer as shown in the upper part of Figure 1b. The second mesh (Mesh 2) consisting of 28x16 cells is different in that only two rows make up the first layer and the thickness of each row is 50 m. The widths of the cells for both meshes have been kept same as those are shown in lower part of Figure 1b. Both meshes have 8 rows of air layers for the TE mode calculations. The forward calculation has been performed for 17 frequencies ranging from 8192 to 0.125 Hz.

The TE and TM mode responses of this model at selected point on the model (stations S1 and S2) are presented as apparent resistivity and phase of impedance in Figure 2. The red lines show the response values from Mesh 1 while blue ones are for Mesh 2. Considering that the only difference between these two meshes is the number of rows used to represent the top layer and the embedded 2D body, the different results and the erroneous responses emphasize the need for accurate grid design in MT forward modeling and inversion. Note that although Mesh 1 gives a more stable result, it still has some design error due to incorrect ratio of the thickness and the width for the cells at upper rows. This error can occur when a user intends opts for

reducing the number of blocks in the mesh in order to have smaller mesh and speed up the inversion process.

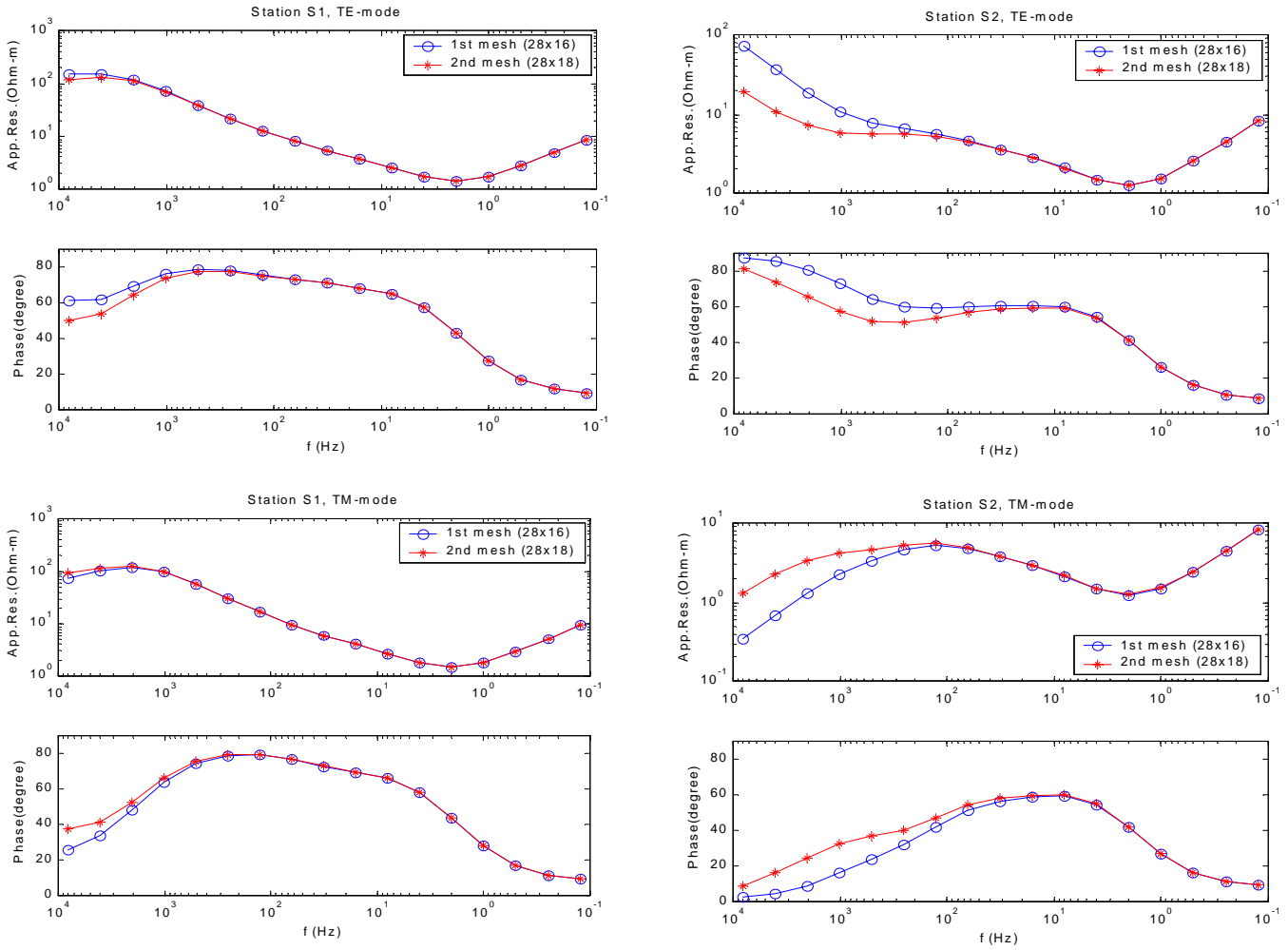
The DDMD approach adopted in this paper may help overcome this problem by handling all stations along the profile and creating an optimum mesh that is more appropriate for the requirements of all stations. Wannamaker *et al.* (1985) and Weaver (1994) give an extensive guideline for better mesh design. The following scheme is based on those guidelines but is different in the sense that we use the PD rather than skin depth definition.

a) nx = 89				
1216418.	243284.	48657.	9731.	1946.
487.	162.	168.	503.	168.
162.	168.	503.	168.	162.
168.	503.	168.	162.	168.
503.	168.	162.	168.	503.
168.	162.	168.	503.	168.
162.	168.	503.	168.	162.
168.	503.	168.	162.	168.
503.	168.	162.	168.	503.
168.	162.	168.	503.	168.
162.	168.	503.	168.	162.
168.	503.	168.	162.	168.
503.	168.	162.	168.	503.
168.	162.	168.	503.	168.
162.	168.	503.	168.	162.
168.	503.	168.	162.	168.
503.	168.	162.	487.	1946.
9731.	48657.	243284.	1216418.	
b) nz = 31				
11.	13.	15.	17.	20.
20.	20.	20.	20.	20.
20.	20.	20.	21.	21.
21.	21.	22.	22.	22.
22.	22.	23.	23.	23.
23.	70.	210.	629.	1887.
9433.				

**FIG.4.** (a) Width and (b) Thickness of the cells calculated by the programme using the data obtained from first mesh of the model given in Fig. 1a as observable data.

## ALGORITHM

Assuming that the input data for a 2D modeling or inversion code is as in Figure 3 (x values are the distance from the first station, z values are the topographic height



**FIG. 2.** The TE and TM mode responses of this model at station S1 and S2 as apparent resistivity and phase of impedance.

```

Title                ! project or profile title
2                    ! number of station
5                    !# of frequencies in following station
0 1 1                ! x, z, external factor for static shift
.10 10 1 45 1        !frequency, apparent resistivity, error Phase of impedance, error
1.0 20 1 40 1
10 30 1 35 1
100 10 1 30 1
100 1.0 1 35 1
4                    !# of frequencies in following station
10 1 1                ! x ,z, external factor for static shift
.10 10 1 45 1
1.0 20 1 40 1
10 30 1 35 1
100 10 1 30 1
    
```

**FIG. 3.** Sample input for 2D inversion code and mesh design programme.

from the datum level; all units are in meters), then an explicit algorithm can be written as

- 1 read the profile data
- 2 calculate the lowest PDs for each station
- 3 remove the maximum and minimum values from the list, calculate average value and divide it by 3 for the minimum thickness
- 4 calculate the largest PDs for each station
- 5 remove the maximum and minimum values from the list and calculate average value for the maximum thickness
- 6 calculate the topographic height differences and, if necessary, adjust the minimum thickness value
- 7 calculate distance between stations and arrange the number of cell which will be placed between them
- 8 print out the mesh and list of the cells to be fixed.

A programme (DDMD) has been written based on the above algorithm. The assigned cell resistivities are all equal in value so that it can be used as a homogeneous half space initial guess model in an inversion process. A list of fixed parameters may be produced and these parameters may then be excluded from an inversion process. The programme currently produces 2 different meshes, which can be read by either `rund2dinv_nleg` (Mackie *et al.*, 1997) or Uchida and Ogawa's code (1993). The input and output can easily be modified for any kind of data and mesh format.

### SAMPLE APPLICATIONS TO SYNTHETIC DATA

As an illustrative example, we have applied DDMD to the data obtained from Mesh 1 for the model given in Figure 1a to produce an optimum mesh necessary for an inversion process. The resultant mesh has 89x31 cells and the width (a) and thickness (b) are shown in Figure 4. To be able to compare the result, a different mesh obtained from mesh generator of WinGlink™ is given in Figure 5. The last one (32x31) is produced by using "Coarse" option with a resistivity of 100 Ohm.m for homogeneous half space where thickness of the rows is increasing according to a pre-assigned fixed scheme, namely 1.5 and 1.2 for horizontal and vertical, respectively (WinGlink, 2000). Note that if one uses "Fine" option for same homogeneous half space, number of the cells in the produced mesh will be 481x73 with minimum distances in  $x$  and  $z$  are 3m and 1m, respectively. Resistivity of homogeneous half space plays a key role in these options. The lower the value is

given the larger the number of cells the programme produces. Selection of the resistivity value for homogeneous half space could be cumbersome in the case of complex geological environments. As a matter of fact, the DDMD scheme is equivalent to select minimum resistivity value among the shallow values and use it to calculate a starting level and delineate the area according to the largest depth obtained from the resistivity value among the lower frequencies. Thus, classical approaches use a single value while DDMD uses double value to create a mesh. The number of the cells that DDMD produces may seem needlessly large as initial mesh used to generate this test data had only 28x18 cells. However, in practical situations, the geometry of the subsurface target is not known in advance and DDMD generates the optimum size of the cells that are justified by the data enabling the inversion schemes to simulate accurate model responses. Note that this definition should not be mixed with the minimum structure inversion (e.g. deGroot-Hedlin and Constable, 1990). The cells produced by DDMD are not the structure but will serve to construct the subsurface structure. Result of the inversion codes have been avoided due to fact that it also requires to judge the solution power of the inversion schemes which remain out of frame of this work.

### CONCLUSIONS

The programme DDMD is an easy-to-use scheme for creating mesh for inversion process. It does not eliminate boundary condition problem of modeling theory but delineates the region over which the modeling scheme may produce a meaningful result. Also it lists the cells that may be fixed to any appropriate values and excluded from the inversion process.

It can be modified to handle a priori information such as the results of 1D inversion but these features have not yet been included to the current version due to the fact that there is no standard input format for the existing 2D MT codes (e.g. see Wannamaker *et al.*, 1985; Mackie *et al.*, 1997). Although it produces a large number of blocks, it can be shown that these are constrained by the data. Although not shown here, the DDMD code has been tested on a number of field data and the meshes have been used to produce geo-electrical models with various inversion programmes. In particular, we have obtained satisfactory results for field data when the output of DDMD is subsequently inverted using a 2D inversion code written by one of us (Ulugergerli and Meju, 1997) and `rund2dinv_nleg` (Mackie *et al.*, 1997).

nx=32									
100000	30000	10000	3000	1000	1000	1000	1000	1000	1000
1000	1000	1000	1000	1000	1000	1000	1000	1000	1000
1000	1000	1000	1000	1000	1000	1000	1000	3000	10000
30000	100000								
nz=31									
25	50	100	100	100	100	100	100	200	200
200	200	200	200	200	200	200	200	500	500
500	750	1250	2000	3000	4500	7500	10000	15000	25000
50000									

**FIG. 5.** (a) Width. and (b) Thickness of the cells calculated by WinGLink™ using the data obtained from first mesh of the model given in Fig.1a as observable data.

## ACKNOWLEDGMENTS

This work was partly completed while one of the authors (EUU) was a postdoctoral associate at Observatório Nacional, Brazil. We thank FAPERJ (Fundação De Amparo À Pesquisa Do Estado Rio De Janeiro) for supporting the work. Our acknowledgement is extended to Dr. Sergio Fontes (O. N., Brazil) for making available the magnetotelluric data for the early testing of the programme, and to Maxwell Meju (Leicester University) for reading the initial draft of this paper.

This work was improved and tested in the frame of a project supported by Scientific and Technical Research Council of Turkey (TUBİTAK) under grant no: 101Y011.

## REFERENCES

- Bostick, F.X., 1977. A simple almost exact method of MT analysis: Workshop on Electrical Methods in Geothermal Exploration, U.S. Geol. Sur. Contract. No. 14080001-8-359.
- Brewitt-Taylor, C.R. and Weaver, J.T., 1976. On the finite difference solution of two dimensional induction problems: Geophy. J. Roy. Astr. Soc., **47**, 375-396.
- Cagniard, L., 1953. Basic theory of the magneto-telluric methods of geophysical prospecting: Geophysics, **18**, 605-635.
- deGroot-Hedlin, C., 1995. inversion for regional 2-D resistivity structure in the presence of galvanic scatterers: Geophys. J. Int., **122**, 877-888.
- deGroot-Hedlin, C. and Constable, S., 1990. Occam's inversion to generate smooth, two-dimensional models from magnetotelluric data: Geophysics, **55**, 1613-1624.
- deLugão P.B, Portniaguine O., and Zhdanov M.S. 1997. Fast and stable two-dimensional Inversion of magnetotellurics data: J. Geomag. Geoelectr., **49**, 1469-1497.
- Jones A.G., 1983. On the equivalence of the "Niblett" and Bostick" transformation in the magneto telluric method: Journal of Geophysics, **53**, 72-73.
- Jupp, D.B.L and Vozoff, K., 1977. Two-dimensional magnetotelluric inversion: Geophys. J.R. astr. Soc., **50**, 333-352.
- Mackie, R.L., Rieven S., and Rodi, W., 1997. Users manual and software documentation two dimensional inversion for magnetotelluric data: M.I.T. Earth Resources Lab. Report.
- Niblett, E.R. and Sayn-Wittgenstein, C., 1960. Variation of electrical conductivity with depth by the magnetotelluric method: Geophysics, **25**, 998-1008.
- Oldenburg, D.W., and Li, Y., 1999. Estimating depth of investigation in dc resistivity and IP surveys: Geophysics, **64**, 2, 403-416.
- Sasaki, Y., 1989. Two-dimensional joint inversion of magnetotelluric and dipole-dipole resistivity data: Geophysics, **54**, 254-262.
- Smith, J.T., and Booker, J.R., 1991. The rapid relaxation inverse for two- and three-dimensional magnetotelluric data: J.Geophys. Res. **96**. No. B3. 3905-3922.
- Tikhonov, A.N., 1950. On determining electrical characteristics of the deep layers of the earth's crust: Dokl. Akad. Nauk., **73**, 295-297.
- Uchida, T. and Ogawa Y., 1993. Development of Fortran Code for Two-dimensional Magnetotelluric Inversion with Smoothness Constraint: Geological Survey of Japan Open-File Report, No. 205, 115pp.
- Ulugergerli, E. U., and Meju, M. A., 1997. Inversion of 2D Magnetotelluric Data Using The Complex Singular Value Decomposition Method: 5th. International Congress of the Brazilian Geophys. Soc., Sao Paulo, Exp. Abst., **2**, 642-645.
- Wannamaker, P. R., Stodt, J. A. and Rijo, L., 1985. PW2D - Finite element programme for solution of magnetotelluric responses of two-dimensional earth resistivity structure: User documentation. University of Utah Res. Inst. Rep. ESL-158.
- Weaver, J.T., 1994. Mathematical methods for Geo-electromagnetic induction: Research Studies Press Ltd., Taunton, Somerset, England.
- Zhdanov M.S., Golubev, N.G., Spichak, V.V and Varentsov I.M., 1982. The construction of effective methods for electromagnetic modeling: Geophys. J. R. astr. Soc. **68**, 589-607.